

*Piner High School* **ATHLETIC HALL OF FAME**



**Piner Basketball 1980-1991**

**Win/Loss and Individual Statistics**

## Data Notes

This data was collected for the purpose of evaluating potential teams and players of the Coach Mike Gaddie era from 1966 to 1991 for Piner Hall of Fame consideration.

This data was primarily collected over a two month period in the spring and early summer of 2012. All data was collected from newspaper microfilm, almost solely from the Press Democrat with a few minor exceptions. Primary data collection took place at the Sonoma County Library (Santa Rosa Branch) and at the California State Library in Sacramento, CA. Other research took place at Sonoma State Library (Rohnert Park Cotati Clarion Newspaper), Petaluma Branch (Petaluma Argus-Courier Newspaper), Healdsburg Branch (Healdsburg Tribune), Cloverdale Branch (Cloverdale Reveille Newspaper) and Calistoga Library (The Weekly Calistogan Newspaper).

This research required approximately 100 hours of data collection (approximately 4 hours per season for 25 seasons). Total game score and total Piner individual scoring was recorded into Excel spreadsheets. Data was not collected for free throws vs. field goals (this data was not consistently recorded by the newspapers in any case) nor was score by quarters and individual opponent scoring. Only one scorebook was found: the 1984 season however this scorebook was missing tournament scoring data. The 1984 season and all of its data was still verified or corrected by Press Democrat reporting. Unfortunately data such as rebounds, assists, turnovers, minutes played, and other data was not recorded consistently by the scorekeepers (as was the case in the 1984 scorebook) nor reported with any consistency by the newspapers and thus could not be recorded here.

All data collection and analysis was produced or supervised by Paul Sanchiatti and any omissions and errors should be reported to him at [psanchiatt@aol.com](mailto:psanchiatt@aol.com).

## Missing Data

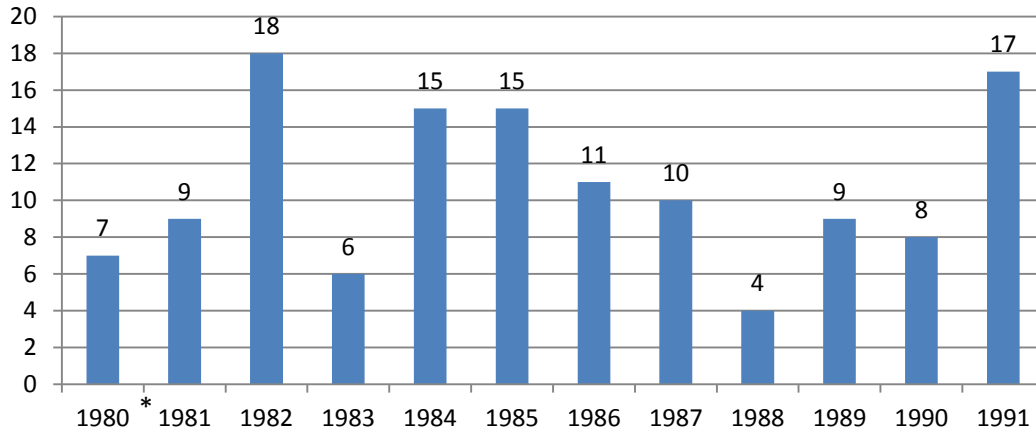
- The box score is missing for Piner's first victory on 12/14/1966 against Concordia and therefore individual scoring is not known. However, a Press Democrat article does mention the final score.
- A loss occurred to an unknown team on approximately 12/20/1966. The loss is referred to in subsequent Press Democrat articles but the team is unknown and so is the final score and individual scoring. This is only unknown game score for the Coach Gaddie era.
- A box score is missing for a loss against Cloverdale on 12/8/1967 and thus individual scoring is unknown. Both the Press Democrat and Cloverdale Reveille newspapers were searched. However, articles in both papers refer to the final score.

- The exact date of a win against Calistoga is unknown. It is believed to have occurred on 12/27/1967 or thereabouts. The box score is missing and therefore individual scoring is unknown. However, a Press Democrat article does refer to the final score. Both the Press Democrat and The Weekly Calistogan were devoid of any box score for this game.
- The date of a loss to Santa Rosa is not known. It is believed to have occurred between 12/13/1968 and 12/17/1968. The box score is missing as well and therefore individual scoring data is missing. An article in the Press Democrat does mention the final score.
- A box score is missing for a win against Montgomery on 12/8/1979 and thus exact individual scoring is not known except for one Piner player. This was Piner and Montgomery's first game of the Healdsburg REIBT. Both the Press Democrat and Healdsburg Tribune newspaper archives were searched. Articles in both newspapers only referred to only one Piner player's scoring.
- The box score is missing for a 12/8/1984 game against Ukiah in the Cloverdale Tournament. Both the Press Democrat and Cloverdale Reveille and the Ukiah Daily Journal newspaper only mentioned the final score and high Piner scorers.
- The location of a 2/24/1987 NBL playoff game to Cardinal Newman is unknown.

#### Points Per Game Determination

Unless a player scored in every game (and therefore the number of games played is known) or an article described a player missing a game because of illness (or other situation) or it is obvious a player missed early games due to football season or it is obvious that a player had just been brought up from the JV's and started and continued scoring, it is impossible to accurately determine points per game. Therefore, if a player scored few points for any given season, points per game should be looked upon as a probable inaccurate statistic.

## Piner Basketball Wins 1980-1991



\* denotes teacher strike shortened season

### Piner 1979-1980

Date	Opponent	Piner	Opponent	W-L
11/28/1979	at Santa Rosa	53	59	L
11/30/1979	Mont.	46	60	L
12/4/1979	at Tamalpais	53	48	W
12/7/1979	CN	39	57	L
12/13/1979	Aracta/Eureka Tour.	33	43	L
12/14/1979	Fortuna/Eureka Tour.	39	43	L
12/15/1979	St. Bernards/Eureka Tour.	62	43	W
12/19/1979	Petaluma	43	55	L
12/21/1979	at Mont.	28	58	L
1/4/1980	Eureka	49	88	L
1/5/1980	RC at Analy	52	64	L
1/9/1980	at CN	38	50	L
1/11/1980	at RC	48	57	L
1/16/1980	Ukiah	62	52	W
1/18/1980	SR	64	56	W
1/23/1980	at Analy	51	58	L
1/25/1980	Sonoma	49	71	L
1/30/1980	Healds.	49	47	W
2/1/1980	at EM	60	40	W
2/6/1980	CG	50	62	L
2/18/1980	Analy	58	64	L
2/13/1980	at Sonoma	53	60	L
2/16/1980	at Healds.	66	52	W
2/20/1980	EM	33	37	L
2/22/1980	at CG	44	58	L

**Total Points**

**1222**

**1382**

**Average Points Per Game**

**48.9**

**55.3**

**7W-18L**

	Points	PPG
Albritton	313	13.0
Linde	261	10.4
Flohr	207	8.3
Brutout	126	5.3
Argue	87	3.5
Wright	47	6.7
Carbajal	46	1.9
Robinson	44	1.8
Sowell	36	
Perez	32	
Derkos	17	
Bennett	8	

### Piner 1980-1981

Date	Opponent	Piner	Opponent	W-L
1/2/1981	Eureka	61	63	L
1/3/1981	Ukiah/at Analy	75	65	W
1/7/1981	CN	57	38	W
1/9/1981	at RC	60	61	L
1/14/1981	at Ukiah	54	50	W
1/16/1981	Mont.	47	52	L
1/21/1981	at CG	64	74	L
1/23/1981	at Analy	72	69	W
1/28/1981	at Sonoma	49	86	L
1/30/1981	Healds.	43	41	W
2/4/1981	at EM	47	40	W
2/6/1981	CG	53	62	L
2/11/1981	Sonoma	67	60	W
2/10/1981	Analy	63	53	W
2/18/2012	at Healds.	48	43	W
2/20/2012	EM	43	48	L

<b>Total Points</b>	<b>903</b>	<b>905</b>	
<b>Average Points Per Game</b>	<b>56.4</b>	<b>56.6</b>	<b>9W-7L</b>

Teacher Strike  
Shortened Season

	Points	PPG
Barich	241	15.1
Flohr	233	14.6
Albritton	232	14.5
Wright	110	6.9
Perez	31	1.9
Joliff	21	1.4
Flores	21	
MgGhie	10	
Gerhardt	2	
Flowers	2	

## Piner 1981-1982

Date	Opponent	Piner	Opponent	W-L
11/28/1981	at CN	35	65	L
12/4/1981	Mont.	58	43	W
12/5/1981	SR	54	46	W
12/10/1981	Vintage/Wine Valley T	42	30	W
12/11/1981	Oakmont/Wine Valley T	51	36	W
12/12/1981	Napa/Wine Valley T	37	39	L
12/17/1981	Cloverdale/Rose City	38	43	L
12/18/1981	St. Benards/Rose City	53	33	W
12/19/1981	CG/Rose City	40	46	L
12/30/1981	Arcata	55	48	W
1/2/1982	Ukiah	60	51	W
1/6/1982	CN	34	45	L
1/8/1982	RC MISSING SPORTS PAGE	66	43	W
1/13/1982	at SR	49	44	W
1/14/1982	at Mont.	38	36	W
1/21/1982	at EM	46	37	W
1/27/1982	CG	45	40	W
1/29/1982	Analy	74	52	W
2/3/1982	at Sonoma	48	47	W
2/5/1982	at Healds.	63	64	L
2/10/1982	EM	57	33	W
2/12/1982	BYE			
2/17/1982	at Analy	49	59	L
2/19/1982	at CG	61	75	L
2/24/1982	Healds.	69	47	W
2/26/1982	Sonoma	47	45	W
2/27/1982	Analy/SCL playoff at Mont.	60	52	W
<b>Total Points</b>		<b>1329</b>	<b>1199</b>	
<b>Average Points Per Game</b>		<b>51.1</b>	<b>46.1</b>	<b>18W-8L</b>
	<b>Points</b>	<b>PPG</b>		
Barich	695	26.7		
M. Flores	192	7.7		
Aronson	115	4.8		
Joliff	96	3.8		
McGhie	54	2.5		
Smith	38	1.7		
Johnston	32	1.4		
Flowers	17			
Castro	21			
Switzer	10			
Koehlinger	11			
Samson	11			
Saput	5			
Jones	11			

### Piner 1982-1983

Date	Opponent	Piner	Opponent	W-L
11/26/1982	RC	44	34	W
12/8/1982	at SR	45	51	L
12/10/1982	at RC	44	46	L
12/16/1982	Ferndale/Eureka T.	56	48	W
12/17/1982	Eureka/Eureka T.	51	56	L
12/18/1982	Pinole Valley/Eureka T.	35	48	L
12/30/1982	at Ukiah	36	51	L
1/6/1983	Cloverdale/SCC T.	34	49	L
1/7/1983	SR/SCC T.	48	38	W
1/8/1983	Healds./SCC T.	65	66	L
1/12/1983	SR	41	33	W
1/13/1983	at Mont.	42	54	L
1/21/1983	at Sonoma	34	36	L
1/26/1983	at CN	42	53	L
1/28/1983	CG	51	54	L
2/1/1983	Healds.	55	39	W
2/4/1983	at Analy	55	51	W
2/8/1983	at EM	44	52	L
2/10/1983	Sonoma	55	45	L
2/16/1983	at CG	48	54	L
2/18/1983	at Healds.	56	58	L
2/23/1983	Analy	52	70	L
2/25/1983	EM	40	52	L
<b>Total Points</b>		<b>1073</b>	<b>1138</b>	
<b>Average Points Per Game</b>		<b>46.7</b>	<b>49.5</b>	<b>6W-17L</b>

	Points	PPG
D'Aloisio	244	10.6
Aronson	198	8.6
Egan	155	7.0
McGhie	141	6.1
Kennedy	117	5.1
Samson	56	2.4
Castro	53	3.5
Johnston	26	3.3
May	21	
Taylor	19	
Saput	14	
Koehlinger	8	
Mulligan	4	
Switzer	4	
Smith	3	
Knox	2	



### Piner 1983-1984

Date	Opponent	Piner	Opponent	W-L
12/3/1983	Eureka	58	49	W
12/7/1983	Pittsburg/Cloverdale T.	39	46	L
12/9/1983	Marin Catholic/Cloverdale T.	60	46	W
12/10/1983	Ukiah/Cloverdale T	45	46	L
12/14/1983	Rincon Vally Christian/Rose City	55	44	W
12/16/1983	Terra Linda/Rose City	51	57	L
12/17/1983	RC/Rose City	40	45	L
12/28/1983	SR/SCC T	49	47	W
12/29/1983	CN/SCC T	39	57	L
12/30/1983	Healds./SCC T	53	49	W
1/4/1984	Petaluma	50	51	L
1/6/1984	Mont.	52	56	L
1/11/1984	at CN	41	48	L
1/13/1984	at RC	45	40	W
1/18/1984	Ukiah	63	44	W
1/20/1984	SR	51	62	L
1/25/1984	Sonoma	46	42	W
1/27/1984	at CG	56	63	L
2/1/1984	at Healds.	59	54	W
2/3/1984	Analy	43	56	L
2/1/1984	EM	60	47	W
2/10/1984	at Sonoma	61	51	W
2/15/1984	CG	58	54	W
2/17/1984	Healds.	63	58	W
2/21/1984	at Analy	67	58	W
2/23/1984	at EM	54	47	W
2/28/1984	Petaluma/Playoff	39	60	L

<b>Total Points</b>	<b>1397</b>	<b>1377</b>	
<b>Average Points Per Game</b>	<b>51.7</b>	<b>51.0</b>	<b>15W-12L</b>

	Points	PPG
Egan	524	20.2
Kennedy	309	12.4
D'Aloisio	156	5.8
Schulz	142	5.3
Fistolera	49	2.2
Vaughn	35	1.6
Ladd	54	2.1
Proctor	35	1.6
Matthias	34	
May	22	
Salvadori	21	
Perez	4	
Pennewell	4	
Pletkin	2	

### Piner 1984-1985

Date	Opponent	Piner	Opponent	W-L
11/29/1984	Eureka	40	55	L
12/6/1984	Dublin/Cloverdale T	52	36	W
12/7/1984	EM/Cloverdale T	52	50	W
12/8/1984	Ukiah/Cloverdale T	44	60	L
12/12/1984	Mont./Rose City	39	36	W
12/14/1984	CN/Rose City	49	44	W
12/15/1984	Drake/Rose City	39	55	L
12/20/1984	Mont./SCC T	29	36	L
12/21/1984	EM/SCC T	58	60	L
12/22/1984	Analy/SCC T	75	62	W
1/2/1985	at Petaluma	47	41	W
1/4/1985	Montgomery	38	48	L
1/9/1985	CN	41	67	L
1/11/1985	RC	60	50	W
1/16/1985	at Ukiah	56	68	L
1/18/1985	at SR	49	45	W
1/23/1985	at Sonoma	57	42	W
1/25/1985	CG	56	45	W
1/30/1985	Healds.	42	50	L
2/1/1985	at Analy	63	66	W
2/6/1985	at EM	45	47	L
2/8/1985	Sonoma	54	44	W
2/13/1985	at CG	73	71	W
2/15/1985	at Healds.	44	53	L
2/19/1985	Analy	76	71	W
2/21/1985	EM	63	56	W

**Total Points**

**1341**

**1358**

**Average Points Per Game**

**51.6**

**52.2**

**15W-11L**

	<b>Points</b>	<b>PPG</b>
Ladd	320	12.3
Schultz	302	12.1
Aaron	274	10.5
Flint	132	5.3
Harper	111	4.6
Vaughn	87	3.8
Proctor	28	1.4
Perez	26	1.2
Fistolera	24	1.1
Pletkin	6	
Almaras	4	
Scott	0	

### Piner 1985-1986

Date	Opponent	Piner	Opponent	W-L
12/6/1985	Novato	53	55	L
12/7/1985	Eureka	56	42	W
12/12/1985	San Marin/Rose City	28	38	L
12/13/1985	Mont./Rose City	33	34	L
12/14/1985	St. Vincent/Rose City	60	46	W
12/18/1985	at RC	39	44	L
12/20/1985	at SR	48	50	L
1/3/1986	SR	42	48	L
1/9/1986	CN/SCC T	37	45	L
1/10/1986	Mont./SCC T	51	49	W
1/11/1986	RC/SCC T	48	60	L
1/15/1986	at Mont.	51	43	W
1/17/1986	at CN	34	48	L
1/22/1986	Ukiah	48	52	L
1/24/1986	at EM	50	35	W
1/29/1986	at Analy	46	53	L
1/31/1986	Healds.	57	64	L
2/5/1986	CG	60	47	W
2/7/1986	at Sonoma	46	45	W
2/11/1986	EM	41	24	W
2/19/1986	at Healds.	51	63	L
2/21/1986	at CG	75	68	W
2/26/1986	Sonoma	60	50	W
2/28/1986	Analy	73	72	W
<b>Total Points</b>		<b>1187</b>	<b>1175</b>	
<b>Average Points Per Game</b>		<b>49.5</b>	<b>49.0</b>	<b>11W-13L</b>

	Points	PPG
Flint	349	14.5
Harper	291	12.1
MacDonald	166	6.9
Neal	127	5.3
Lane	116	4.8
Williams	58	2.4
Adams	25	
Almaras	14	
Joliff	14	
Schaack	8	
Thompson	2	
Scott	11	
Lopez	4	
Kille	2	

### Piner 1986-1987

Date	Opponent	Piner	Opponent	W-L
11/26/1986	at CG	61	47	L
12/4/1986	Petaluma/Rose City	75	67	W
12/5/1986	CG/Rose City	45	59	L
12/6/1986	SR/Rose City	40	52	L
12/11/1986	McKinleyville/Arcata T.	33	48	W
12/12/1986	Sonoma/Arcata T	40	51	L
12/13/1986	Mt. Eden/Arcata T.	45	69	L
12/17/1986	at Analy	54	65	L
12/19/1986	at Sonoma	44	50	L
1/2/1987	Analy	59	76	L
1/3/1987	EM	40	45	L
1/8/1987	RC/SCC T	58	50	W
1/9/1987	SR/SCC T	41	51	L
1/10/1987	Healds./SCC T	65	63	W
1/14/1987	at Healds.	54	62	L
1/16/1987	at EM	36	40	L
1/22/1987	CN	60	43	W
1/23/1987	Mont.	45	42	W
1/28/1987	at Ukiah	46	62	L
1/30/1987	at SR	47	38	W
2/4/1987	RC	52	45	W
2/6/1987	at CN	42	45	L
2/12/1987	at Mont.	58	46	W
2/13/1987	Ukiah	53	68	L
2/17/1987	SR	61	52	W
2/20/1987	at RC	55	53	L
2/24/1987	CN/2nd Place Playoff Unknown	58	57	L

**Total Points**

**1367**

**1446**

**Average Points Per Game**

**50.6**

**53.6**

**10W-16L**

	Points	PPG
MacDonald	314	11.6
Lane	255	9.4
Neal	208	7.7
Thompson	188	7.0
Capurro	169	6.3
Adams	102	3.8
Schaak	44	1.6
Joliff	40	1.5
Kille	12	
Perez	11	
Walker	8	
Hagle	6	
Blake	5	

### Piner 1987-1988

Date	Opponent	Piner	Opponent	W-L
11/25/1987	CG	61	63	L
11/27/1987	EM	42	58	L
12/3/1987	CG/Rose City	65	63	W
12/4/1987	Analy/Rose City	47	69	L
12/5/1987	Eureka/Rose City	38	72	L
12/10/1987	Eureka/Arcata T.	63	68	L
12/11/1987	Sonoma/Arcata T.	50	47	L
12/12/1987	McKinleyville/Arcata T.	42	48	L
12/16/1987	Analy	43	44	L
12/18/1987	Sonoma	59	37	W*
1/2/1987	at Analy	43	47	L
1/7/1988	SR/SCC T	39	81	L
1/8/1988	Mont./SCC T	33	36	L
1/9/1988	RC/SCC T	57	59	L
1/15/1988	at EM	41	49	L
1/20/1988	at RC	53	54	L
1/22/1988	CN	37	58	L
1/27/1988	Mont.	39	42	L
1/29/1988	at Ukiah	56	67	L
2/3/1988	SR	34	37	L
2/5/1988	RC	66	45	W
2/10/1988	at CN	48	57	L
2/12/1988	at Mont.	46	36	W
2/17/1988	Ukiah	56	73	L
2/19/1988	at SR	42	51	L

**Total Points**

**1200**

**1361**

**Average Points Per Game**

**47.4**

**54.2**

**4W-21L**

\*denotes Coach Gaddie's 200th win

	Points	PPG
Thompson	394	17.9
Capurro	173	8.7
Perez	137	5.5
Sprull	104	4.2
Blake	92	3.7
Dural	76	5.4
Birkenes	43	1.7
Hagle	42	1.7
Sixta	39	1.6
Frances	27	
Wheeler	21	
Holiday	15	
Radford	12	
Dodds	7	

### Piner 1988-1989

Date	Opponent	Piner	Opponent	W-L
11/23/1988	at CG	50	58	L
11/26/1988	Monte Vista	43	68	L
11/29/1988	Novato	48	40	W
12/1/1988	Analy/Rose City	56	58	L
12/2/1988	EM/Rose City	50	31	W
12/3/1988	CG/Rose City	36	45	L
12/8/1988	McKinleyville/Arcata T	60	66	L
12/9/1988	Sonoma/Arcata T	52	39	W
12/10/1988	Fortuna/Arcata T	39	53	L
12/14/1988	at Analy	46	63	L
12/30/1988	at EM	54	44	W
1/5/1989	Mont./SCC T	43	44	L
1/6/1989	Healds./SCC T	54	44	W
1/7/1989	Analy/SCC T	55	52	W
1/11/1989	at SR/ Healds.	46	33	W
1/13/1989	EM	45	26	W
1/18/1989	at SR	34	62	L
1/20/1989	RC	50	44	W
1/25/1989	at CN	27	62	L
1/27/1989	at Mont.	38	44	L
2/1/1989	Ukiah	40	52	L
2/3/1989	SR	28	39	L
2/8/1989	at RC	55	80	L
2/10/1989	CN	33	56	L
2/15/1989	Mont.	44	45	L
2/17/1989	at Ukiah	58	79	L
<b>Total Points</b>		<b>1184</b>	<b>1327</b>	
<b>Average Points Per Game</b>		<b>45.5</b>	<b>51.0</b>	<b>9W-17L</b>
	<b>Points</b>	<b>PPG</b>		
Kramer	348	13.4		
Spruill	171	6.6		
Dural	165	7.2		
Birkenes	117	4.5		
Earnshaw	88	3.4		
Brosnan	69	2.7		
Vidovic	62	2.4		
Dodds	61	2.3		
Powers	55	3.2		
Francis	21			
Pham	8			
Norris	5			
Radford	4			
Holiday	2			
Brady	10			

## Piner 1990-91

Date	Opponent	Piner	Opponent	W-L
11/28/1990	at CG	66	35	W
11/30/1990	Pinole Valley	67	50	W
12/1/1990	San Marin	61	60	W
12/6/1990	Eureka/Rose City	58	32	W
12/7/1990	Mont./Rose City	51	56	L
12/8/1990	Petaluma/Rose City	67	51	W
12/12/1990	at Analy	63	56	W
12/13/1990	Ygnacio Valley/San Ramon T.	50	63	L
12/14/1990	San Leandro/San Ramon T.	67	60	W
12/18/1990	Redwood at Larkspur	78	60	W
12/20/1990	Tamalpais	54	57	L
12/29/1990	at Novato	50	65	L
1/3/1991	EM/SCC T.	71	38	W
1/4/1991	SR/SCC T.	62	57	W
1/5/1991	Mont./SCC T.	38	47	L
1/9/1991	Healds.	49	41	W
1/11/1991	CN	67	47	W
1/16/1991	at Ukiah	70	67	W
1/18/1991	at SR	61	71	L
1/25/1991	RC	58	40	W
1/30/1991	Mont.	62	66	L
2/1/1991	at CN	56	53	W
2/6/1991	at Ukiah	59	66	L
2/8/1991	SR	59	58	W
2/13/1991	at RC	60	74	L
2/15/1991	at Mont.	45	54	L
2/20/1991	RC	72	63	W
2/22/1991	Mont./NBL T.	41	55	L
<b>Total Points</b>		<b>1662</b>	<b>1542</b>	
<b>Average Points Per Game</b>		<b>59.4</b>	<b>55.1</b>	<b>17W-11L</b>
	<b>Points</b>	<b>PPG</b>		
Kramer	782	27.9		
Phan	249	8.9	Smith	PPG
Lawton	193	6.9	2	
Meinzen	174	6.2		
Banks	107	3.8		
Plantz	42	3.5		
Lewis	29			
Lawton	23			
Briggs	12			
Watson	12			
M.Gregory	11			
E.Gregory	9			
Moore	8			

## Piner 1990-91

Date	Opponent	Piner	Opponent	W-L
11/28/1990	at CG	66	35	W
11/30/1990	Pinole Valley	67	50	W
12/1/1990	San Marin	61	60	W
12/6/1990	Eureka/Rose City	58	32	W
12/7/1990	Mont./Rose City	51	56	L
12/8/1990	Petaluma/Rose City	67	51	W
12/12/1990	at Analy	63	56	W
12/13/1990	Ygnacio Valley/San Ramon T.	50	63	L
12/14/1990	San Leandro/San Ramon T.	67	60	W
12/18/1990	Redwood at Larkspur	78	60	W
12/20/1990	Tamalpais	54	57	L
12/29/1990	at Novato	50	65	L
1/3/1991	EM/SCC T.	71	38	W
1/4/1991	SR/SCC T.	62	57	W
1/5/1991	Mont./SCC T.	38	47	L
1/9/1991	Healds.	49	41	W
1/11/1991	CN	67	47	W
1/16/1991	at Ukiah	70	67	W
1/18/1991	at SR	61	71	L
1/25/1991	RC	58	40	W
1/30/1991	Mont.	62	66	L
2/1/1991	at CN	56	53	W
2/6/1991	at Ukiah	59	66	L
2/8/1991	SR	59	58	W
2/13/1991	at RC	60	74	L
2/15/1991	at Mont.	45	54	L
2/20/1991	RC	72	63	W
2/22/1991	Mont./NBL T.	41	55	L
<b>Total Points</b>		<b>1662</b>	<b>1542</b>	
<b>Average Points Per Game</b>		<b>59.4</b>	<b>55.1</b>	<b>17W-11L</b>
	<b>Points</b>	<b>PPG</b>		
Kramer	782	27.9		
Phan	249	8.9	Smith	PPG
Lawton	193	6.9	2	
Meinzen	174	6.2		
Banks	107	3.8		
Plantz	42	3.5		
Lewis	29			
Lawton	23			
Briggs	12			
Watson	12			
M.Gregory	11			
E.Gregory	9			
Moores	8			



### Joe Barich

- scored 52% of the 1982 total teams points (695 of 1,324)
- was Coach Gaddie's third all-team leading scorer, yet he played on the JV's as a sophomore and played in only 16 games as a junior due to the Santa Rosa teacher strike in 1981
- was denied being SCL player of the year though he scored over 30 points a game in league play shattering Matt Waldron's records (SCL player of the year went to a Casa Grande player who averaged 20 ppg)
- scored 37 points in a victorious SCL playoff game against Analy for second place in the 1982 but was denied NCS playoff entry
- averaged 26.7 ppg in 1982 (only 1.2 less points ppg than Steve Kramer in 1991) but this was before the 3-point line which was first introduced in the 1986 season
- led his team to Coach Gaddie's second best record 18-8
- scored 40 points in one game against Healdsburg, the 3<sup>rd</sup> most in the Coach Gaddie era (the second most points scored in one game in the Coach Gaddie era was Sean Flint: 41 vs. Casa Grande in 1986.
- averaged 15.1 ppg in his junior year while two other players had 14.6 and 14.5 ppg respectively that same year
- battled Craig McMillan of Cloverdale in a legendary battle between the two scoring stars on 12/17/1981 at the Cardinal Newman Rose City Tournament

### Steve Kramer

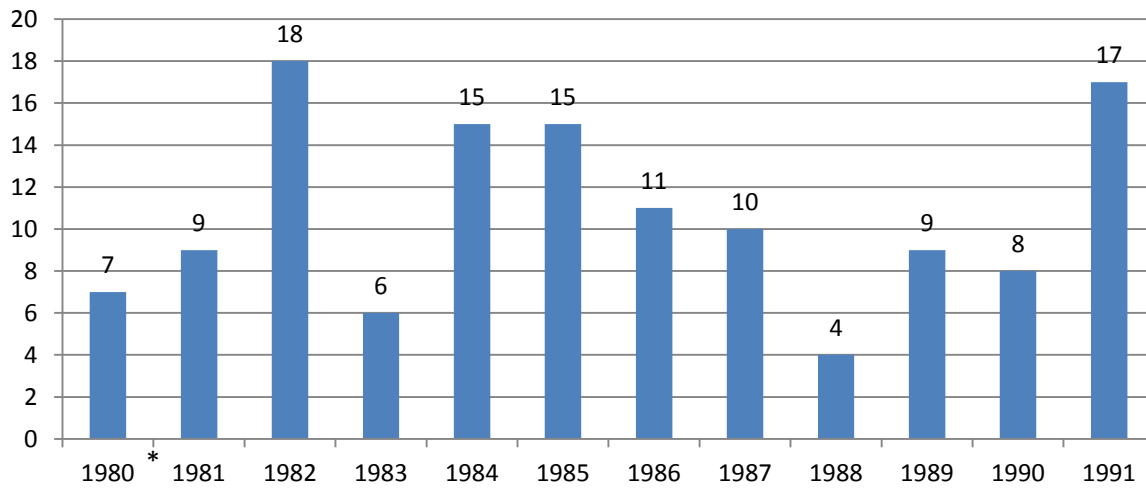
- is Coach Gaddie's all time leading scorer with 1,539 points
- scored 47% of the 1991 teams points (782 of 1,662)
- was NBL player of the year in both his junior and senior years
- averaged 27.9 ppg in his senior year, 1991
- led his team to Coach Gaddie's third best record, 17-11 in 1991
- scored 47 points in one game, the most in the Coach Gaddie era (vs. San Leandro, 1991 season)
- scored 35 points vs. Rancho Cotate in an NBL playoff game to decide 2<sup>nd</sup> place though Piner was denied NCS playoff entry
- Averaged 22 ppg in his junior year

# Piner High Basketball Team Statistics/Records 1980-1991

## Most Wins

1981-82	18
1990-91	17
1983-84	15
1984-85	15

## Piner Basketball Wins 1980-1991

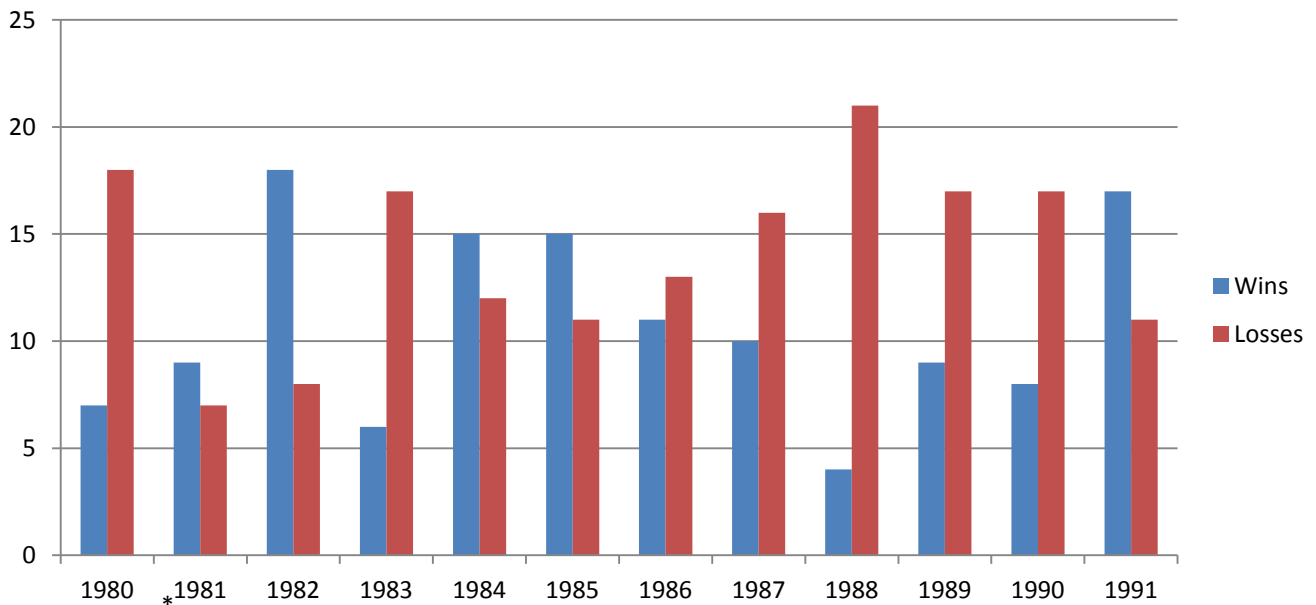


\* denotes teacher strike shortened season

Best Team Records

1981-82	18-8 (69%)
1990-91	17-11 (61%)
1984-85	15-11 (58%)
1983-84	15-12 (56%)

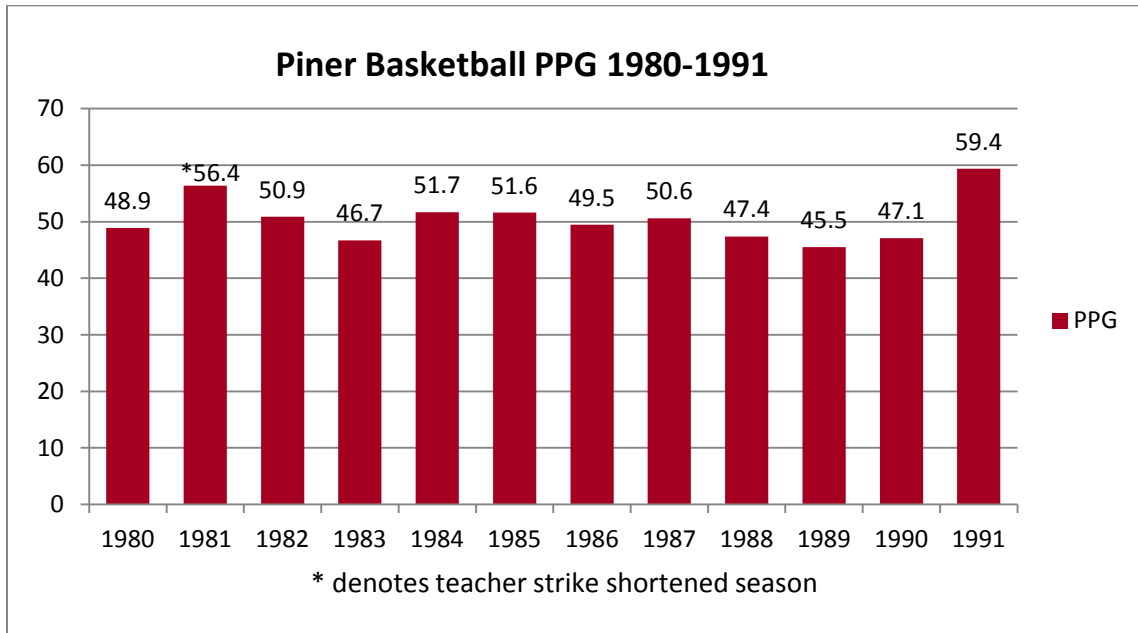
**Piner Basketball Wins/Losses 1980-1991**



\* denotes teacher strike shortened season

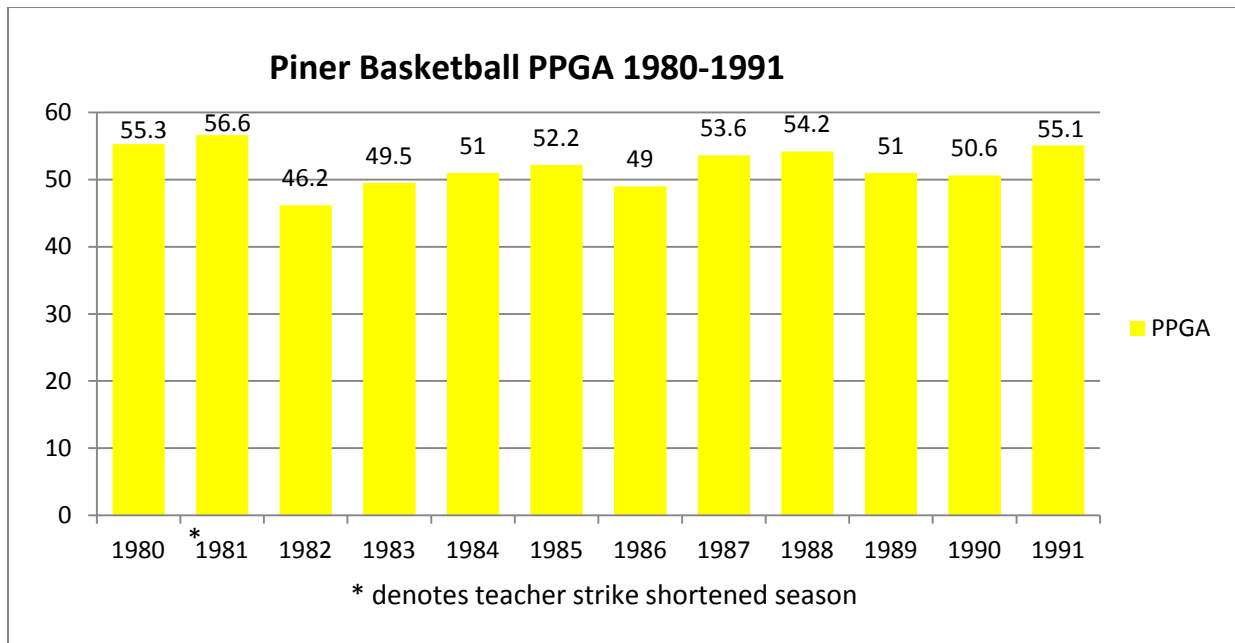
Best Offensive Teams (PPG)

1990-91	59.4
1980-81	56.4

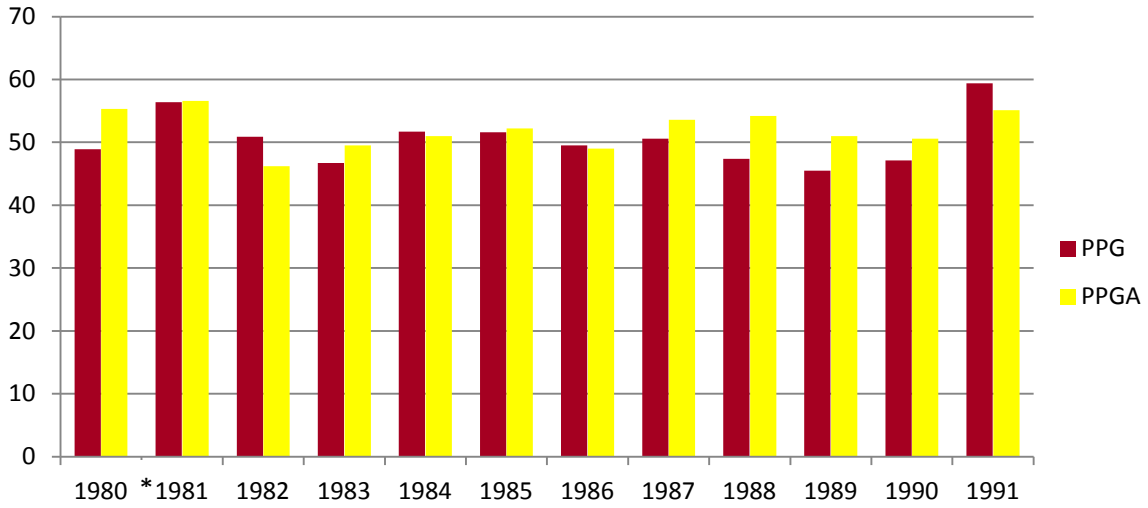


Best Defensive Teams (PPG)

1981-82	46.2
1985-86	49.0

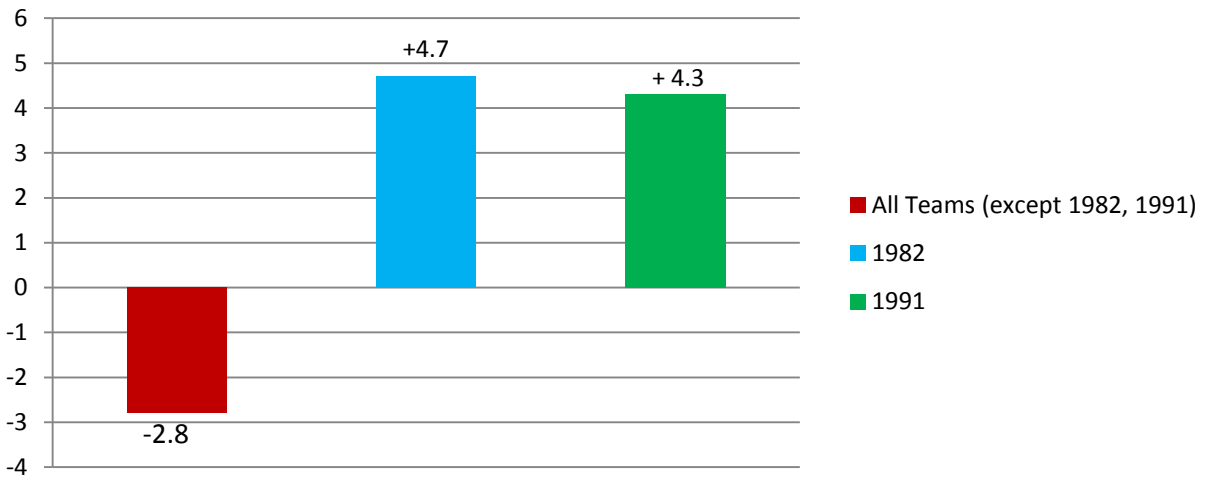


### Piner Basketball PPG/PPGA 1980-1991



\* denotes teacher strike shortened season

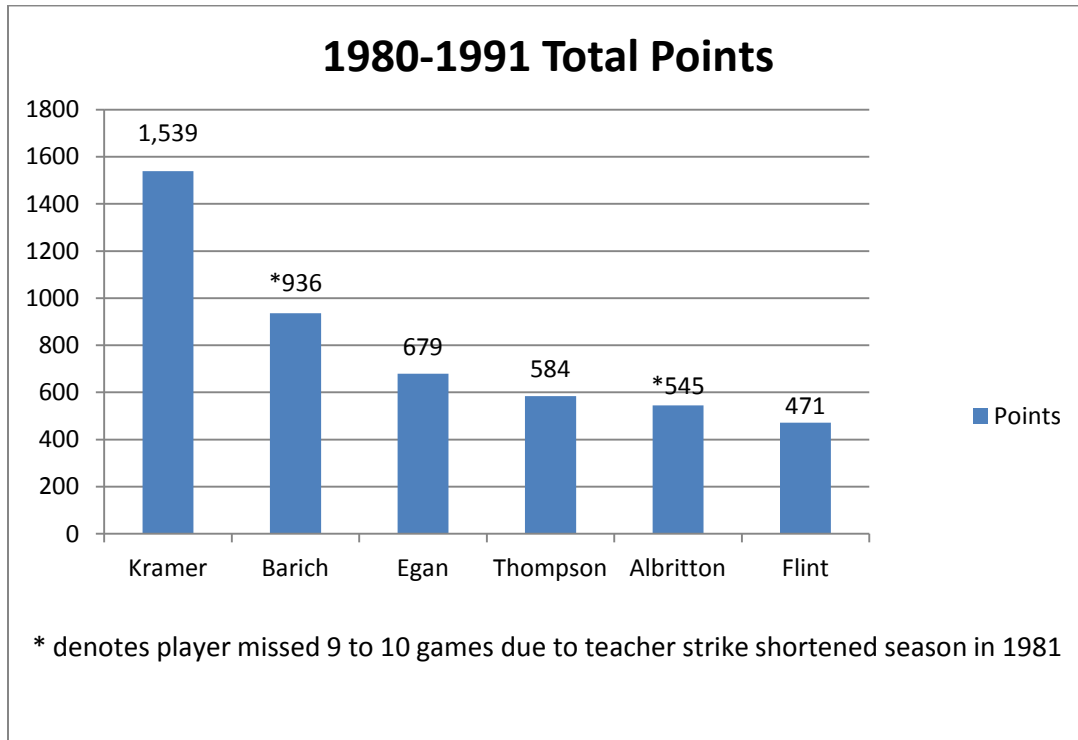
### Average Point Spread Differential



# Piner High Basketball Individual Statistics/Records 1980-1991

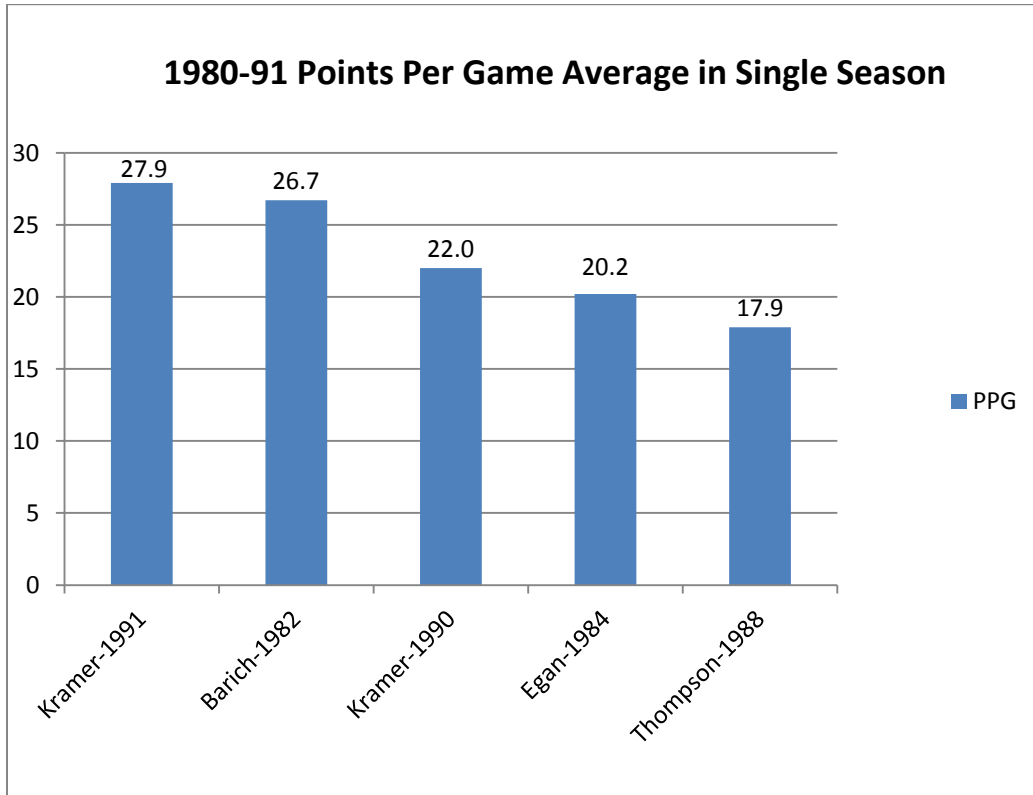
## Career Point Leaders

Kramer	1,539 (3 years)
Barich	936 (*2 years)
Egan	679 (2 years)



Highest Individual Points Per Game in a Single Season

Kramer	27.9 (1990-91)
Barich	26.7 (1981-82)
Kramer	22.0 (1989-90)
Egan	20.2 (1983-84)
Thompson	17.9 (1987-88)



### Most Points in a Single Season

Kramer	782 (1990-91)
Barich	695 (1981-82)
Egan	524 (1983-84)
Kramer	463 (1989-90)
Thompson	394 (1987-88)

